

Identification of Cetacean Critical Habitats to support relevant conservation measures

Florence DESCROIX-COMANDUCCI
ACCOBAMS Executive Secretary

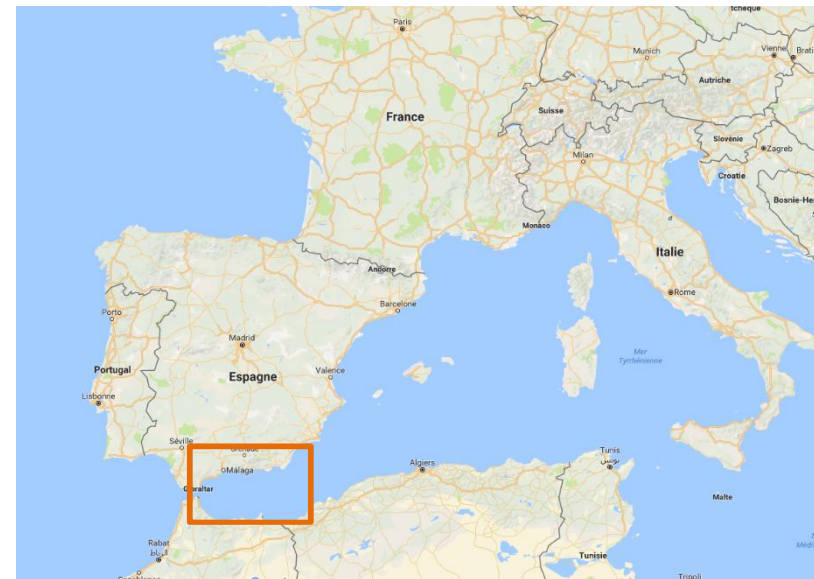


Context

Traffic Separation Scheme (TSS) modification in Spain

The initiative for the repositioning of the TSS “Off Cabo de Gata” (Andalusia, Spain) came from the accomplishment of an European LIFE Nature project

Waters off Cabo de Gata constitute an extremely valuable and sensitive coastal habitat and one of the most important Special Areas of Conservation for the bottlenose dolphin and the loggerhead turtle in the Mediterranean

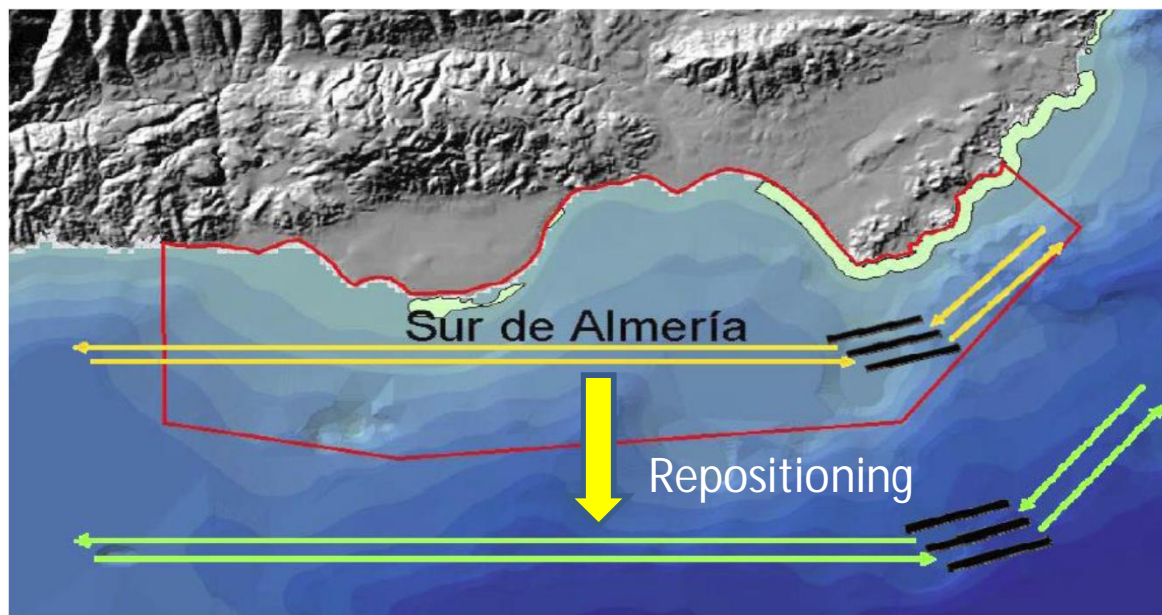


High biodiversity area + one of the busiest areas for the passage of large tonnage maritime traffic

Context

TSS modification in Spain

In 2006, the Spanish Maritime Authorities promoted, within the IMO, the repositioning of the TSS of Cabo de Gata from 5 to 20 nautical miles off the coast



Measure primarily intended to reduce strikes between ships

benefits to the species in the area

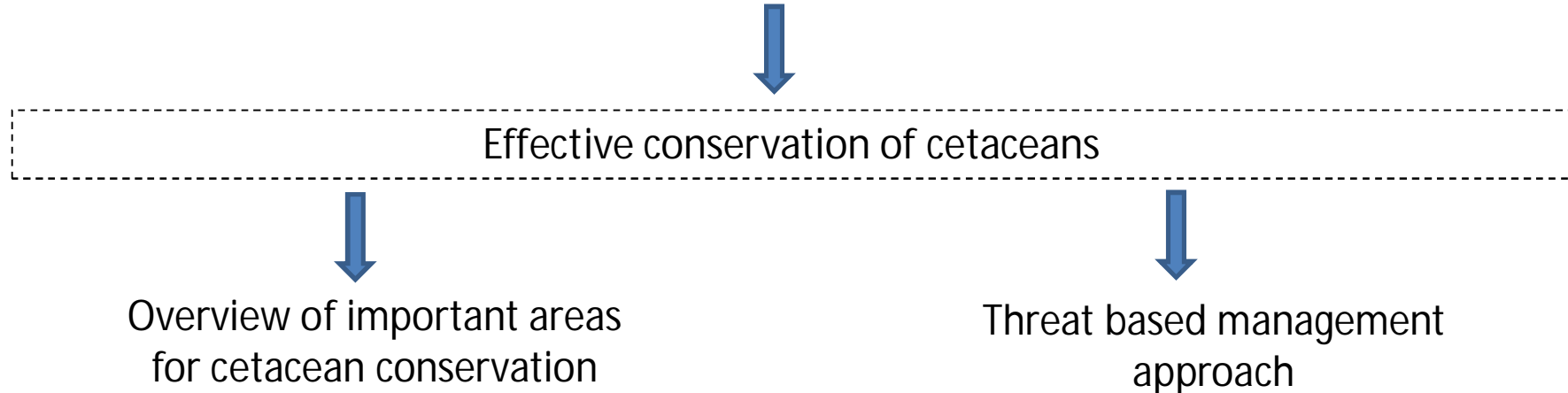
↘ collisions
↘ noise pollution

Challenges / Perspectives

Cetacean Critical Habitats

The concept of 'critical habitat' is commonly referred to in the context of MPAs.

However, in the context of cetacean conservation and management, it is important to incorporate the concept of actual and potential /or human activities and threats at the population level into consideration of 'critical' and appropriate for consideration as an MPA.



Challenges / Perspectives

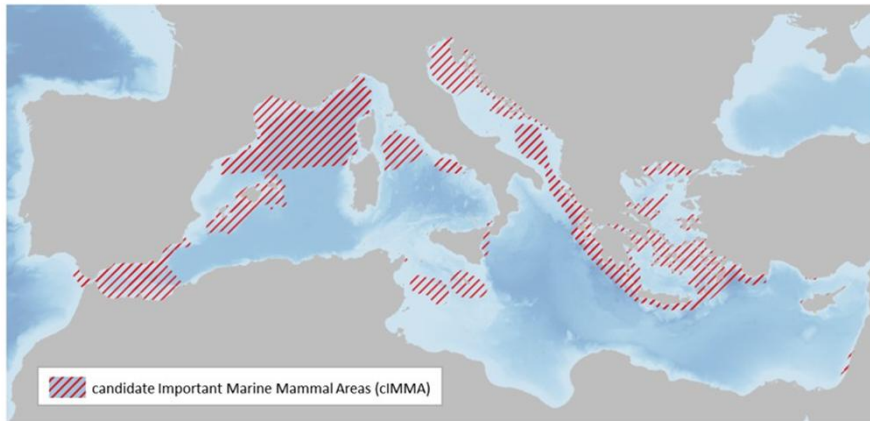
22 Cetacean Critical Habitats



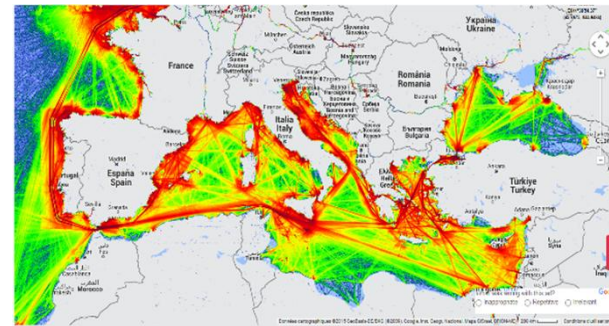
Challenges / Perspectives

22 Cetacean Critical Habitats / under revision

Cetacean distribution / areas of importance

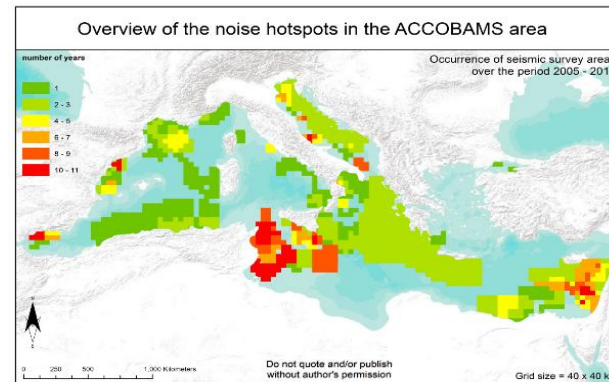


Human activities / threats



Maritime traffic

First IMMA Regional Workshop
(Chania, Greece, 24-28 October 2016)



Noise hotspot

THE 2016 FORUM
of Marine Protected Areas
in the Mediterranean

Organised by:

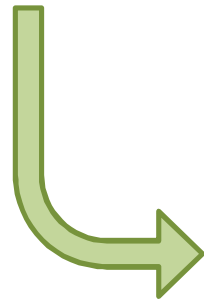


Recommendations

News areas defined as Cetacean Critical Habitats



- creation of new specific MPAs
- extension of existing neighboring MPAs
- implementation of other conservation tools



- specific seasonal measures?
- specific sectorial management measures (maritime traffic, fisheries activities, seafloor installation, oil and gas, ...) - tools such as IMO recommendations / TSS / PSSA / Fisheries Restrictive Areas?

Thank you - Merci

ACCOBAMS Permanent Secretariat

Jardin de l'UNESCO, Terrasses de Fontvieille
MC 98000 MONACO
Tel: (+377) 98 98 20 78

www.accobams.org